



HIVEWORX



**Hive-NPME**  
Hive Nursing Practice Monitoring & Evaluation  
a Product of HiveWorx Limited





# Hive Nursing Practice Monitoring & Evaluation

## User friendly, Cost effective, Dynamic and Comprehensive Advanced Nursing solution!

Hive-NPME is a state-of-the-art Tracking, Monitoring and Evaluation product specifically designed for Nursing Practice Programmes, It is a module of **Hive Enterprise Performance Management** product suite which is implemented at renowned Healthcare and Academic institutions. Hive-NPME system is a set of processes and activities designed to track, monitor and evaluate programme Key Performance Indicators (KPI) and to measure, analyse and predict overall performance of a student.

Hive-NPME also functions as a complete & secure student tracking system, including comprehensive clinical skill logs, reports, student portfolios, student and preceptor databases, comprehensive collection of student patient encounter and more. It allows students to easily enter patient encounter information such as diagnoses and procedure codes, clinical information, demographics etc.

### Hive-NPME Benefits

The benefit of adopting NPME is best articulated by the core deliverables of Information management with End to End Governance, Alignment and Value. H-NPME supports all modern analytical techniques and processes. The solution offers multiple benefits that enables educational institutes to make proactive decisions.

- Out of the Box
- Cost-Effective
- Fully covers Advanced nursing practices
- Compliant with Healthcare and advanced Nursing standards (SNOMED CT, HL7, ICD etc.)
- Technology Agnostic
- Turnkey solution incorporated with Hive Technology suite
- Flexible and scalable
- On premises and/or Cloud enabled
- Product as a Service (PaaS)
- Integration/Interoperability
- 24/7 Helpdesk Support

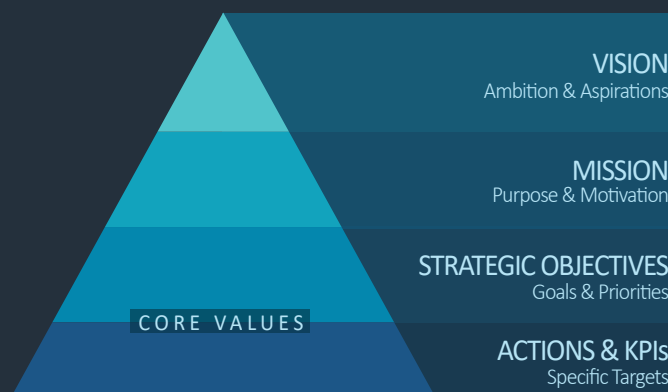
### Distinct Features

- Clinical Experience
- Student & Preceptor Database
- Student Scheduling and Progress
- Curriculum Mapping
- Clinical Site Database
- Portfolio Management
- Secure Document Management
- Biographic Database
- Clinical Encounter tracking
- Clinical Notes Mining
- Time Log
- ICD & CPT Coding
- Student Accreditation
- Evaluations & Surveys
- Advanced Analytics
- Alerts and Notifications
- Customizable Features
- Secure Online Access
- Multilingual Interface
- Smart Device Compatible
- Work Flow Management
- Plagiarism Checker
- SCORM Compliant

### Hive-EPM at a Glance

Hive-NPME is a module of **Hive-EPM** product suite which translates strategy into action by linking KPIs to organization's Objectives, and aligning Objectives with Missions and Vision of the organisation.

Hive-EPM empowers the end users to configure the solution as per the changing needs of the enterprise. It allows healthcare users to define new KPIs, Objectives, Missions, Vision, Perspectives or initiatives on the go, users are also empowered to perform analytics that are critical in facilitating quick and efficient decision making.





# Hive Nursing Practice Monitoring & Evaluation

User friendly, Cost effective, Dynamic and Comprehensive Advanced Nursing solution!

## NPME Core Components

A typical Monitoring and Evaluation (M&E) framework consists of three core components; Monitoring, Evaluation and Analytics.

### Monitoring

Monitoring component of Hive-NPME identifies activities or resource allocation in need of improvement to achieve desired results. This component ensures activities are implemented in accordance with plans and timelines. It is also responsible for providing data to Evaluation and Analytics modules for program evaluation and decision-making.

### Evaluation

The Evaluation component of Hive-NPME provides an objective and reliable assessment of the activities and their outcomes. It confirms that adopted strategies and available funding produced the desired results. It also assists stakeholders in decision-making about future program improvements and implementations.

### Analytics

Information and Data collected in Monitoring and Evaluations processes is analysed by the powerful Advanced Analytics module which helps in effectively planning and executing the program. This module converts and presents the data in a simple, clearly understandable information which can be directly actioned for greater success.

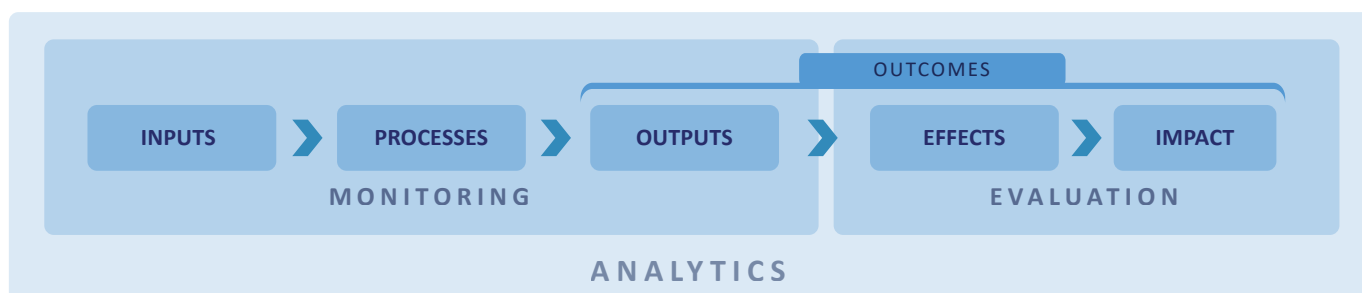


Figure 1.0: A typical M&E framework contains the levels illustrated in this figure.

- **Inputs** are resources provided for an activity, and include cash, supplies, personnel, equipment and training.
- **Processes** transform inputs into outputs.
- **Outcomes** refer to peoples’ responses to a programme and how they are doing things differently as a result of it. They are short term effects related to objectives.
- **Outputs** are the specific products or services that an activity is expected to deliver as a result of receiving the inputs.
- **Effects** A service is effective if- it “works”, i.e. it delivers outputs in accordance with its objectives. A service is efficient or cost-effective if-effectiveness is achieved at the lowest practical cost.
- **Impacts** are the effects of the service on the people and their surroundings. These may be economic, social, organizational, health, environmental, or other intended or unintended results of the programme. Impacts are long-term effects.

**Key Users of NPME**

- Program Directors
- Clinical Coordinators
- Administrative Assistants
- Faculty
- Preceptors
- Students

Follow @HiveWorx

- [twitter.com/hiveworx](https://twitter.com/hiveworx)
- [facebook.com/hiveworx](https://facebook.com/hiveworx)
- [linkedin.com/company/hiveworx/](https://linkedin.com/company/hiveworx/)

▪ [www.Hive-Worx.com](http://www.Hive-Worx.com)  
 ▪ [info@hive-worx.com](mailto:info@hive-worx.com)

+353-1-853-7318  
 +92-51-8443494

Unit 13, B.A.S.E. Enterprise Centre  
 Dublin 15, Republic of Ireland.



## About HiveWorx

HiveWorx is a technology innovation house with proven expertise in niche product development and services. Our dynamic solutions provide our customers with meaningful and valuable insight into their data, enabling their workforce to make better and informed decisions. HiveWorx' innovative solutions are powered by robust, agile, scalable and flexible frameworks, governance processes, methodologies and technologies. We aspire to deliver tangible value by building sustainable technology solutions that enable our customers to achieve their goals and objectives.

HiveWorx has a global presence through an extended partner network in Europe, Middle East, Africa and Asia.

We look forward to helping you with your Technology needs!

## Contact HiveWorx

[www.Hive-Worx.com](http://www.Hive-Worx.com)  
[info@hive-worx.com](mailto:info@hive-worx.com)

+353-1-853-7318  
+92-51-8443494

Unit 13, B.A.S.E. Enterprise Centre  
Dublin 15, Republic of Ireland.

## Follow us @HiveWorx

- [twitter.com/hiveworx](https://twitter.com/hiveworx)
- [linkedin.com/company/hive-worx](https://linkedin.com/company/hive-worx)
- [facebook.com/hiveworx](https://facebook.com/hiveworx)

© Copyright 2018, HiveWorx Ltd.

All rights reserved. No part of this document may be reproduced, modified, deleted or expanded in any form or means without the written permission from HiveWorx. The information contained herein is subject to change without notice.

Hive-EPM® is a trademark belonging to HiveWorx Ltd.